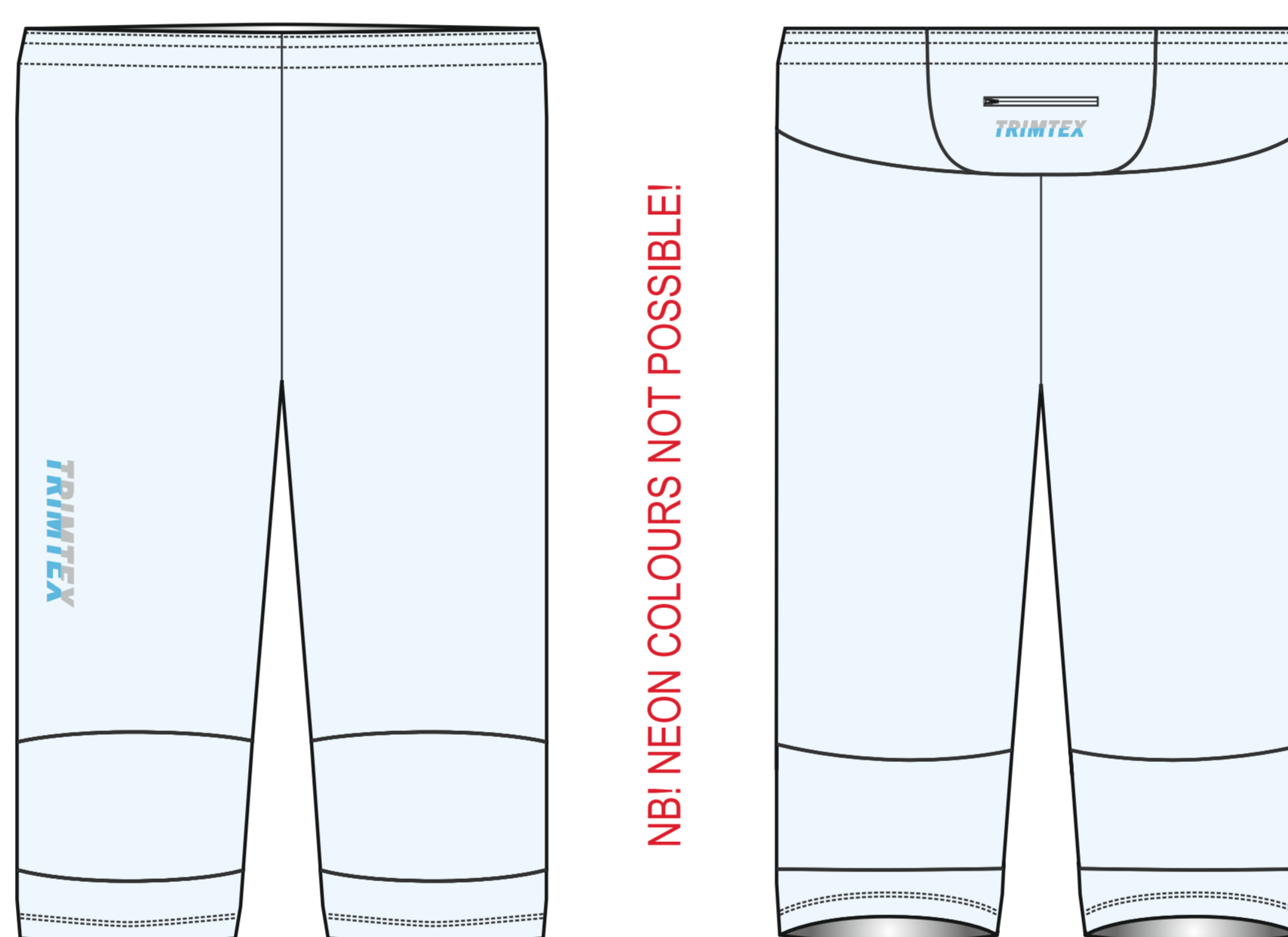


- Colours may not appear accurate on your screen or printed paper. For a particular result ask for colourtest from your sales representative.
 - We highly recommend not to place design over seams – Trimtex can not guarantee perfect result for this.
 - It is not allowed to remove or change placement of Trimtex logos.
 - Only vectorized logos for production.
 - Use “Pantone solid coated” colours for design.
 - Trimtex Designer will adjust design if it’s necessary because of technical issues.
- Copyright © Templates are property of Trimtex, protected by copyright and allowed to use only for Trimtex products.

TRIMTEX
TRIMTEX

Design yourself

E25-L EXTREME SHORT O-PANTS



□ PRINTABLE AREA

■ NON-PRINTABLE FABRIC